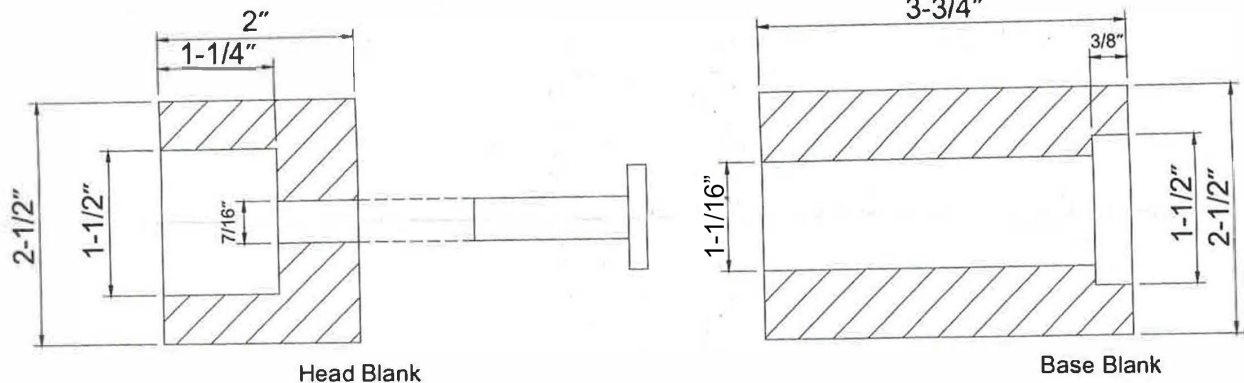


Shake n' Grind

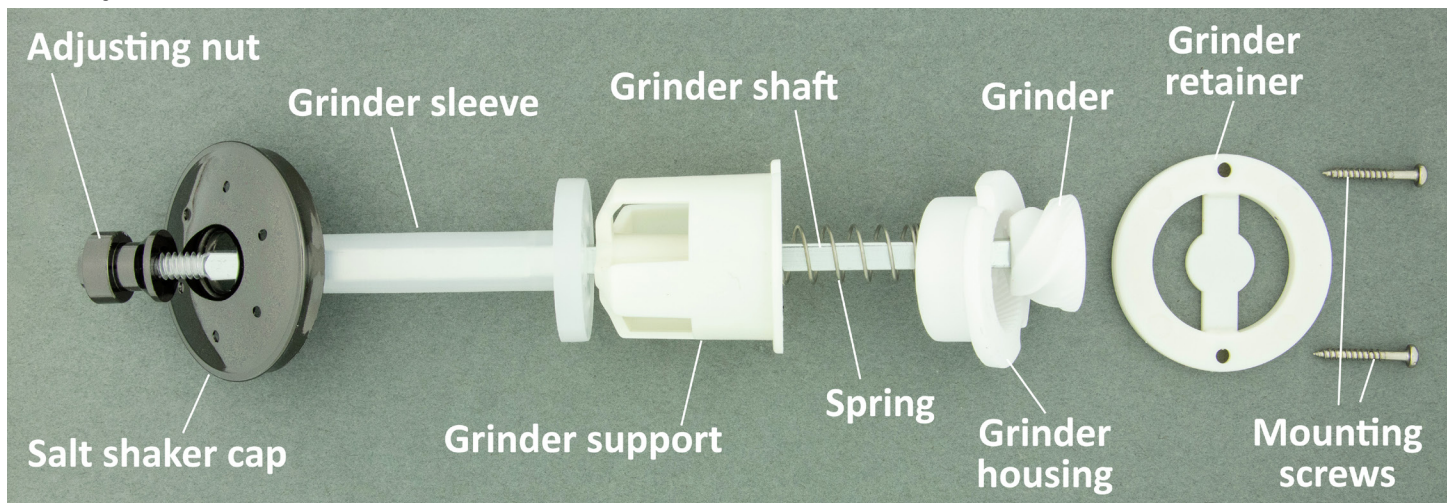
Salt Shaker & Peppermill Combo

Instructions



Required:

- 1-1/2 forstner bit
- 1-1/16 forstner bit
- 7/16 drill bit
- 1" jam chuck
- 1 1/2" jam chuck



Boring the blanks

Base:

- Mark the center on both ends of the blank.
- Drill a 1-1/2" hole, 3/8" deep at the bottom of the base.
- Drill a 1-1/16" hole through the entire blank.

Head:

- Mark the center on both ends of the blank.
- Drill a 1-1/2" hole, 1-1/4" deep on the top end of the blank. Check to make sure the salt plate fits into this recess.
- Follow with a 7/16" diameter hole to the end.

Turning the blanks

Head blank:

- Mount the head blank on a 1 1/2" jam chuck and expand the hole.
- Bring the tailstock center into the hole at the opposite end and lock in place.
- Turn the head blank into a profile that is consistent with the base blank.
- Sand and finish the wood.

Base blank:

- Mount the base blank on a 1" jam chuck and expand it in the hole.
- Bring the tailstock center into the hole at the opposite end and lock in place.
- Turn the base blank to the profile of your choice.
- Sand and finish the wood.

Assembly

- Layout parts according to the parts diagram.
- Insert the grinder components over the grinder shaft, creating a grinder assembly.
- Insert the assembly through the bottom of the base blank and push in.
- Align the slots on the recess, affix the grinder retainer and mark the holes for drilling.
- Drill small pilot holes (1/16") in the recess and screw in the mounting screws.
- Drill small pilot holes (1/16") in the bottom of the head blank using the grinder sleeve holes as a template. Insert the grinder sleeve through the bottom of the head blank and screw it into place.
- Insert the head blank over the extended shaft, into the recess at the base.
- Affix the salt shaker cap into the hole at the head blank.
- Follow with the adjusting nut.

To fill with pepper:

Unscrew the adjusting nut, remove the head blank and fill the container with pepper corns. Replace the head piece. Use the adjusting nut to set the grind.

To fill with salt:

Remove the adjusting nut and the salt shaker cap. Fill with granulated salt. Replace parts.